

Partners



Anziani e non solo
Project coordinator
Italy



Aproximar
Portugal



Asociatia Habilitas
Romania



Cyprus University of
Technology
Cyprus



The European Association
for Social Innovation
Romania



Fundación INTRAS
Spain



Redial
Ireland



COMPASS

Supporting Care Managers Leading in Person
Centered Care



Supporting care managers working in elderly
care services to adapt their skills to provide PCC
leadership.

Follow us!



<https://leadingcare.eu/>



www.facebook.com/CompassEuProject



www.linkedin.com/company/compass-eu-project



www.youtube.com/@compassproject

Funded by the European Union. Views and opinions expressed are however those of the author(s) only and do not necessarily reflect those of the European Union or the European Education and Culture Executive Agency (EACEA). Neither the European Union nor EACEA can be held responsible for them.

Project number:2022-1-IT01-KA220-VET-000085084

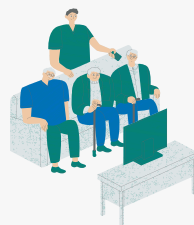
Get to know Compass



COMPASS is an Erasmus+ project developed by seven partners from six European countries: Italy, Portugal, Romania, Cyprus, Ireland, Spain.



COMPASS is an initiative designed for **care managers** in elderly care services (residential, semi-residential and home care).



Its mission is to **fill in a gap in** the current training offer for managers and help them adapt their skills to provide **PCC leadership** and to effectively support front-line workers in implementing PCC services.

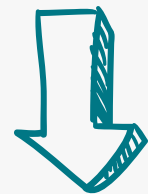
Project objectives



Offer care managers the space and methodology to support reflection, reflexivity and learning from work-based experience about the application of PCC principles in their services.

Develop a **network of professionals** exercising this job at national level and willing to share a professional development process on how to promote PCC in their working contexts.

Develop a **European Community of Practices** of care managers and care workers on PCC for older persons aiming to:



- share experience and skills
- build a common language
- support the consolidation of a new professional vision on humanistic care

Foreseen results



Care managers as drivers of PCC

A multi-language, blended learning training package addressed to care managers across Europe.

Supporting reflexivity of care managers

A methodology to run online reflective groups of care managers committed to improve the PCC practices of their organizations, inspired by the “work discussion groups” (WDGs) methodology.

Building and sharing practices

A digital Community of Practice for European care managers committed to improve the PCC practices of their organizations.

**According to WHO Person Centered Care is care that is respectful and more responsive to the needs of people and strives to keep them healthy and free of illness.*